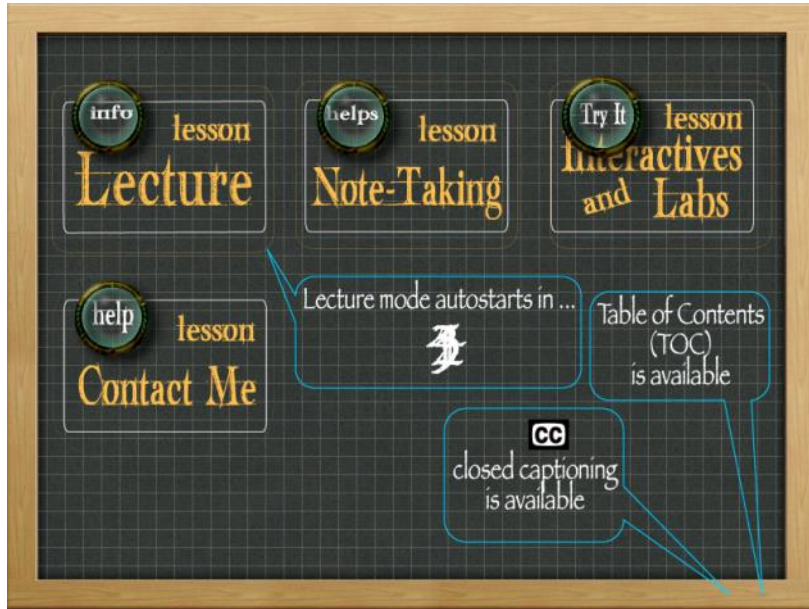


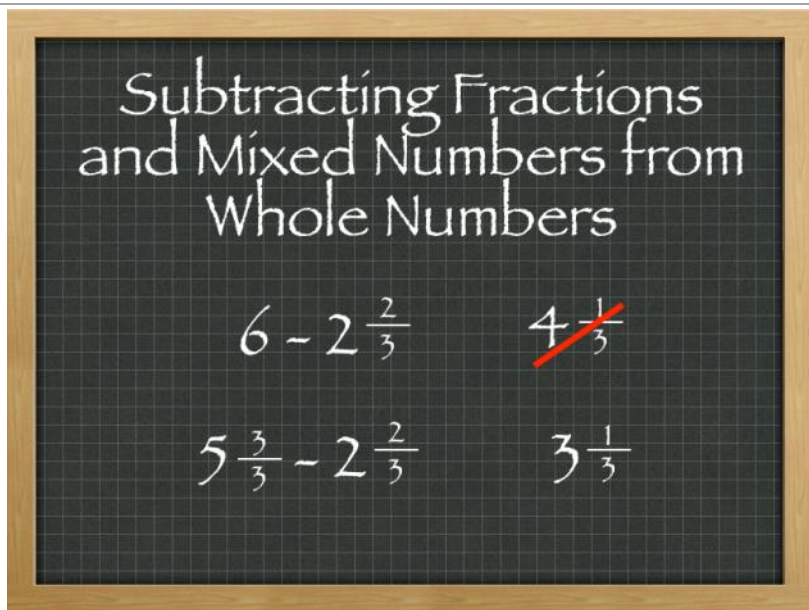
Subtracting a Fraction from a Whole Number Greater than 1

Thursday, March 01, 2012
8:57 AM

Slides



Notes



What would you expect the answer to be for 6 minus 2 and 2/3rds? Did you come up with 4 and 1 third? This is a common error with subtracting fractions or a mixed number from a whole number. You are tempted to subtract the whole numbers and then take the fraction away from a whole number.

Here is a way to do these that will keep you from falling into this easy trap.

Take your whole number and split it out into a mixed number. Notice here that I have 1 less as the whole number and the 1 that I took off of the whole number is here as a fraction that is equal to 1 with the same denominator as the fraction of the other number that is being subtracted.

Do the subtraction now and what do you come up with?

Yes! You got it. It was easy to hit the correct answer. Split the whole number out into a mixed number any time that you are doing subtraction from a whole number and you will hit the correct answer much more easily.

Try It

$$7 - 4\frac{2}{8}$$

$$\square - \frac{\square}{\square} - 4\frac{2}{8}$$

Congratulations!
You have completed
this topic

Give us feedback about
this lesson if you wish...

