

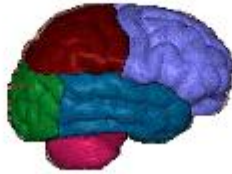
M05 Game Day

Friday, July 16, 2010
7:19 AM

M5 Game Day Solutions



Team



	L1	L2	L3
parietal lobe			
frontal lobe			
occipital lobe			
temporal lobe			
cerebellum			

LECTURE 1 Column

parietal lobe



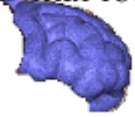
What water source is a molecule of water in once it has gone through transpiration?

1

Choose one answer.

- a. glaciers
- b. atmosphere
- c. oceans
- d. groundwater

frontal lobe



If a lake has no means of getting rid of water except evaporation, does it contain saltwater or freshwater?

Choose one answer.

- a. freshwater
- b. saltwater

occipital lobe



What process in the hydrological cycle is responsible for making glaciers?

Choose one answer.

- a. precipitation
- b. evaporation
- c. transpiration
- d. condensation

temporal lobe



What does the ocean tell us about the age of the earth?

Answer:

They tell us that the earth can't be billions of years old. If the earth was more than a few million years old, the oceans would be much saltier.

cerebellum



Water was in the ocean and is now in a cloud. What two hydrologic cycle processes happened in order to make that transfer?

Choose at least one answer.

- a. condensation
- b. transpiration

Water was in the ocean and is now in a cloud. What two hydrologic cycle processes happened in order to make that transfer?

Choose at least one answer.

- a. condensation
- b. transpiration
- c. precipitation
- d. evaporation

LECTURE 2 Column

parietal lobe



The process by which water moves downward in the soil, toward the water table	Percolation
The average time a given particle will stay in a given system	Residence time
Evaporation of water from plants	Transpiration
The cooling of a gas that happens when the gas expands with no way of getting more energy	Adiabatic cooling
The process by which a gas turns into a liquid	Condensation

LECTURE 3 Column

parietal lobe



What is the largest source of liquid freshwater on the planet?

Choose one answer.

- a. atmosphere
- b. groundwater
- c. glaciers
- d. oceans

frontal lobe



Where is the residence time longer: in the ocean or in a fast-moving stream?

Choose one answer.

- a. ocean
- b. fast-moving stream

occipital lobe



BLANK

temporal lobe



1 What causes the temperature change that allows for condensation, which makes most clouds?

Choose one answer.

- a. precipitation
- b. adiabatic cooling
- c. percolation
- d. evaporation

cerebellum



If a sample of gas is compressed and nothing else is allowed to change, what will happen to the temperature of the gas?

Choose one answer.

- a. The temperature will not change
- b. The temperature will decrease
- c. The temperature will increase

Second Chance Column

parietal lobe



Why is groundwater pollution so hard to trace back to its original source?

Answer:

The nature of groundwater flow makes it such that a lake can be polluted by groundwater that originally soaked into the soil hundreds of miles away. When you find a lake polluted by groundwater pollution, how will you know where it came from?

frontal lobe



Where does the majority of earth's water reside?

1

Choose one answer.

- a. glaciers
- b. atmosphere
- c. ground water
- d. oceans

occipital lobe



An enormous amount of ocean water in the polar region freezes. Does it form an iceberg? Why or why not? (This question is worth 2 points, one for the yes/no, one for the why or why not.)

Answer:

No, it does not form an iceberg. Icebergs are freshwater and come from glaciers. Sea ice has salt mixed in with it. (This question is worth 2 points, one for the yes/no, one for the why or why not.)

temporal lobe



If there is a lot more rain than normal in an area over an extensive length of time, what happens to the depth of the water table?

Choose one answer.

- a. The depth of the water table will not change
- b. The depth of the water table will increase
- c. The depth of the water table will decrease

cerebellum



BLANK

Quiz: <http://www.virtualhomeschoolgroup.com/mod/quiz/view.php?id=17628>

Exam: <http://www.virtualhomeschoolgroup.com/mod/quiz/edit.php?cmid=17630>