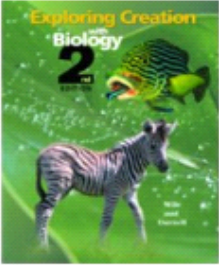








M16 L1 Class Reptiles

Thursday, March 05, 2009
11:48 AM

VoiceThread	http://voicethread.com/share/175762/
Cmap	

Slides	Notes
<p data-bbox="263 537 480 800"></p> <h2 data-bbox="511 552 860 772">Module 16: Reptiles, Birds, and Mammals</h2> <p data-bbox="250 846 548 1066"> Lecture 1: Reptiles Lecture 2: Birds Lecture 3: Mammals Labs Interactive Practice</p>	<p data-bbox="971 520 1523 615">A past student's family raised reptiles for a living and one family was a rescue family for the local shelter's reptiles.</p>
<p data-bbox="337 1104 803 1129">Characteristics common to all in Class Reptilia</p> <div data-bbox="318 1171 557 1388"><p data-bbox="318 1354 557 1388">Order Rhynchocephalia</p></div> <div data-bbox="589 1171 824 1388"><p data-bbox="589 1354 824 1388">Order Squamata</p></div> <div data-bbox="188 1419 451 1656"><p data-bbox="188 1623 451 1656">Order Testudines</p></div> <div data-bbox="467 1419 711 1656"><p data-bbox="467 1623 711 1656">Order Crocodilia</p></div> <div data-bbox="727 1419 954 1656"><p data-bbox="727 1623 954 1656">Dinosaurs</p></div>	<p data-bbox="971 1098 1190 1123">Ring - ko - cephalia</p>

Common Characteristics:

covered with tough, dry scales
lung breathers
3-chambered heart w/partially divided ventricle
amniotic eggs w/leathery shell. Most are oviparous,
some are ovoviviparous
2-paired legs, if they have any

Add ectothermic - It is on the test!

Scales

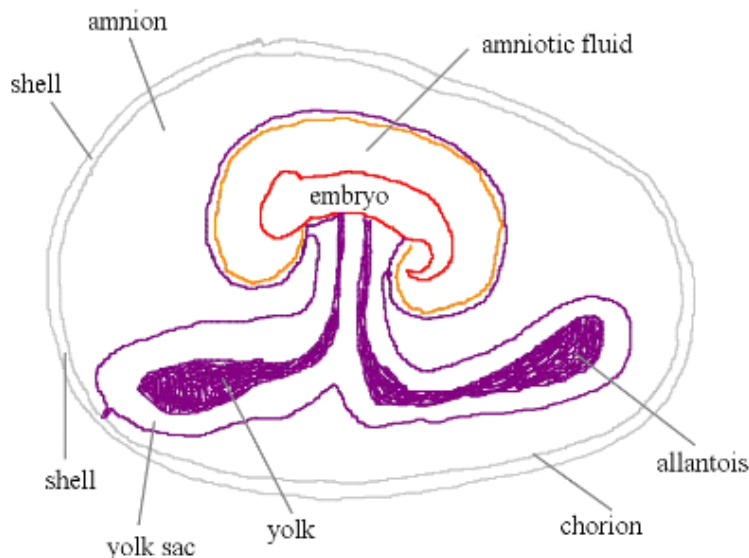


Dry, leathery - not slimy

Insulation - they will use sun and shade, but the scales help it to stay a little more steady

Protection

Not living tissue so it doesn't grow - necessitates shedding skin. They lose the old scales when they shed



Shell - structure and support, regulate moisture loss, part of immune system. It is porous enough to let gases pass but not water. Made of calcium

Fertilization will be internal

supermarket eggs are infertile chicken eggs.

Yolk is food supply.

Define allantois (all - en - toe - is):

The sac of blood vessels that allow for the respiration and excretion of the embryo.

Define Amnion

Grows around the developing embryo, forming a fluid-filled sac in which the embryo floats. It is the immune system that will destroy the pathogens that make it through the shell.

Kor - e - on

Thin skinlike

Characteristics common to all in Class Reptilia



Order Rhynchocephalia



Order Squamata



Order Testudines



Order Crocodylia



Dinosaurs

Dinosaurs and the one living 'dinosaur' tuataras



Two - ah - torrah
Means spine bearer

3rd eye - scales grow over it, but it can see light

60 year life span
20 years to sexual maturity

Unattended eggs fell prey to rats brought to the island

Efforts to build population back up

Characteristics common to all in Class Reptilia



Order Rhynchocephalia



Order Squamata



Order Testudines



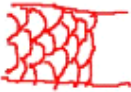

Order Crocodylia



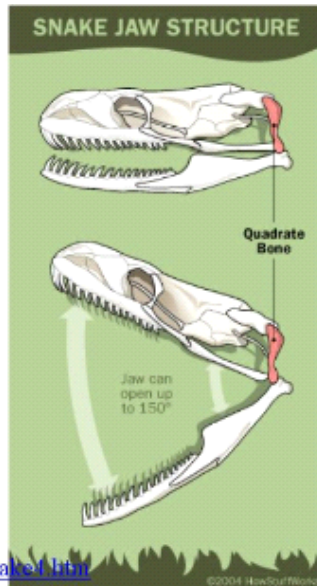
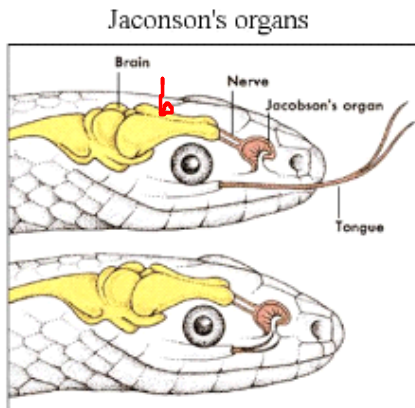
Dinosaurs

Snakes	Lizards	Same order
no limbs	2 pairs of limbs	
no ears, deaf	have ears	
specialized scales on their bellies for locomotion	same types of scales all over their bodies	
no eyelids	eyelids	

👉 **Snakes**
Lizards

scutes (scoots)	S - shape locomotion
 <p>regular scales</p>  <p>underside (belly)</p>	

Hunting and Senses



Jacobson (not Jaconson which is a typo)

Skin stretchy around mouth despite scales

Swallow whole 0 bigger than the normal circumference of body

Pits - pit vipers only (not shown). Picks up on heat. Rattlesnakes, moccasins, copperheads, western diamondbacks

<http://animals.howstuffworks.com/snakes/snakes1.htm>

Venoms - Hemotoxin



Copperhead

Hemotoxins cause the blood vessels to rupture.

Their prey is weakened and can bleed to death.



Venoms - Neurotoxin

Seizes up the nerve centers causing paralysis - breathing can stop.

coral snake



Coral snake - short, fixed teeth

Cobra - 3/4th of snake bite deaths. Black headed cobras can spit their venom - they aim for the eyes.

Fangs move forward on strike so they don't puncture their lower jaw



Venoms - Caridotoxin

Deteriorates the muscles of the heart until it stops beating.

cobra

Constrictors

Record breaking Anaconda



Squeeze

Snakes 👉 Lizards

gecko



chameleon



Gecko - sticky pad feet

Chameleon can change color. Pet shops often sell color changing anoles as chameleons. Tongue as long as body.

Horned toad - not a toad. Puffs self up, shoots blood out of eyes, and runs.

horned toad



gila monster



Gila - poison gland. It will bite and let nasty bacteria do the job.

Characteristics common to all in Class Reptilia



Order Rhynchocephalia



Order Squamata



Order Testudines



Order Crocodylia



Dinosaurs

Turtle

vs

Tortoise



water
hinged



land
not hinged

Land tortoise: 300 lbs

Leatherback Sea Turtle

1500 lbs!



Characteristics common to all in Class Reptilia



Order Rhynchocephalia



Order Squamata



Order Testudines



Order Crocodylia



Dinosaurs

Alligator

vs

Crocodile



Rest and wait for prey. Eyes high on their head.

How to tell the difference

Alligator/Crocodile Reproduction



Rotting Vegetation keeps the eggs warm

2 weeks to hatch. Mother will check on them frequently and dig the eggs up a little when she hears them chirping.

Characteristics common to all in Class Reptilia



Order Rhynchocephalia



Order Squamata



Order Testudines



Order Crocodilia



Dinosaurs

Reptiles keep on growing their whole lives



"Jurassic Park" Universal Studios Exhibit

Keep Growing

Behemoth

Fossils

95% of the fossils are mollusks
of the remaining 5%, 95% are marine vertebrates
Of that 5%, 95% are of insects
of the remaining 5% we have reptiles, plants, and mammals

That is a mere 0.0125% of the fossils are of reptiles, plants, and mammals!

8am - <http://www.virtualhomeschoolgroup.com/mod/quiz/view.php?id=921>

9am - <http://www.virtualhomeschoolgroup.com/mod/quiz/view.php?id=11027>

2:30 - <http://www.virtualhomeschoolgroup.com/mod/quiz/view.php?id=14039>



Jacob's
critters
😊

